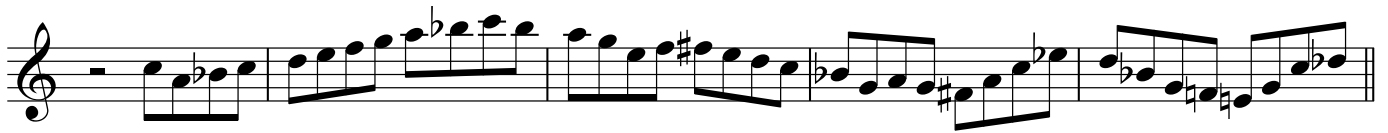


# Star Trek Theme - Tom Harrell

Transcribed by Miguel Gorodi



2 38

42

46

50

54

58

62

66

70

74

78

82

This image shows a page of musical notation for a single melodic line, spanning measures 38 to 82. The notation is written on a single staff in treble clef. The key signature is one flat (B-flat), and the time signature is 2/4. The music consists of a series of eighth and sixteenth notes, often beamed together, with various accidentals (sharps, flats, and naturals) indicating chromatic movement. There are several rests throughout the piece, particularly in measures 42, 46, 54, 66, and 74. The notation includes slurs, ties, and dynamic markings such as accents and hairpins. The page number '2' is located at the top left, and the measure numbers 38, 42, 46, 50, 54, 58, 62, 66, 70, 74, 78, and 82 are placed at the beginning of their respective staves.

86

90

94

98

102

106

110

114

118

122

126

130