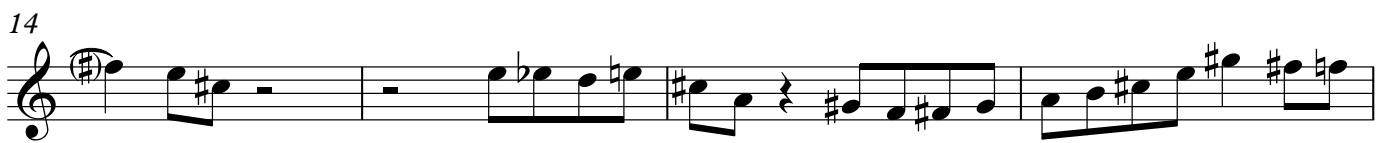


Star Trek Theme - Tom Harrell

Transcribed by Miguel Gorodi



2 38

42

46

50

54

58

62

66

70

74

78

82

Detailed description of the musical score: The score is written in a single treble clef staff. It begins at measure 38 with a whole rest, followed by a series of eighth and sixteenth notes. The key signature is one sharp (F#) and one flat (Bb). The melody features various rhythmic patterns, including eighth-note runs, sixteenth-note passages, and occasional rests. The score concludes at measure 82 with a final melodic phrase.

86



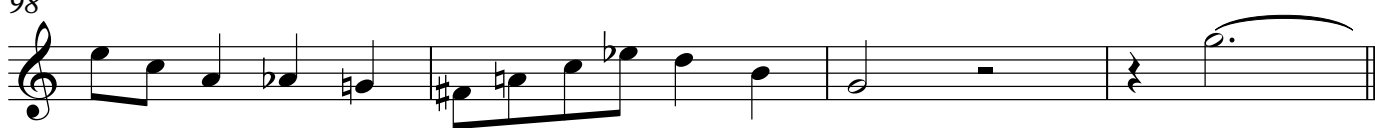
90



94



98



102



106



110



114



118



122



126



130

